

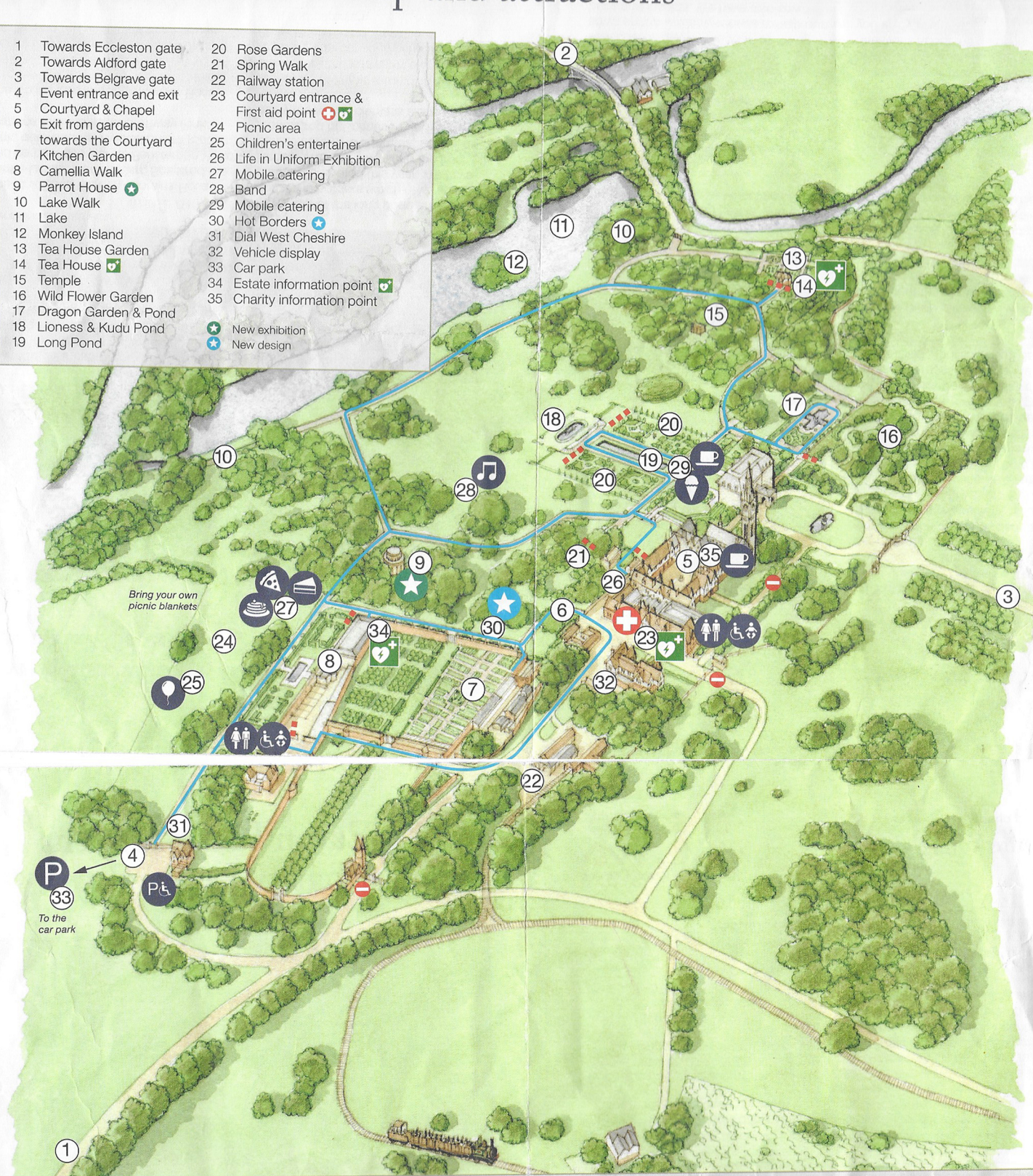
Eaton Hall Garden map and attractions

- 1 Towards Eccleston gate
- 2 Towards Aldford gate
- 3 Towards Belgrave gate
- 4 Event entrance and exit
- 5 Courtyard & Chapel
- 6 Exit from gardens towards the Courtyard
- 7 Kitchen Garden
- 8 Camellia Walk
- 9 Parrot House
- 10 Lake Walk
- 11 Lake
- 12 Monkey Island
- 13 Tea House Garden
- 14 Tea House
- 15 Temple
- 16 Wild Flower Garden
- 17 Dragon Garden & Pond
- 18 Lioness & Kudu Pond
- 19 Long Pond
- 20 Rose Gardens
- 21 Spring Walk
- 22 Railway station
- 23 Courtyard entrance & First aid point
- 24 Picnic area
- 25 Children's entertainer
- 26 Life in Uniform Exhibition
- 27 Mobile catering
- 28 Band
- 29 Mobile catering
- 30 Hot Borders
- 31 Dial West Cheshire
- 32 Vehicle display
- 33 Car park
- 34 Estate information point
- 35 Charity information point

- New exhibition
- New design

Bring your own picnic blankets

P
33
To the car park



What's on today...

Today's event is being run by volunteers from Cheshire Young Carers. To learn more about the charity visit their information stand in the Courtyard (35).

- Tickets for rides on Katie the steam engine were pre-booked online only. No tickets are available during the day – all trains are now fully booked. Tickets are not transferable to other time slots so please be on time for your train departure if you have booked tickets.
- Children's entertainer in the garden (25).
- Chester Wind Band performing in the Gardens (28).
- Frodsham Sings performing at the Courtyard (5) at 1pm and 2pm. The organ will be played in Eaton Chapel at intervals during the afternoon.

- Outdoor refreshments points are located in the gardens (27) and by the Long Pond (29).
- Charity refreshments and charity stalls at the Courtyard (5).
- Floral displays and plant stall near the exit from the gardens (6).
- Toilets and baby changing facilities are located at the Courtyard (5) and close by the event entrance into the gardens.
- Dogs are welcome but should be kept on a lead at all times. Please clean up after your dog – thank you.

The programme is weather dependent and may be subject to change.

Access information

Mobility equipment stand (free hire) – map ref. 32

Key	Accessible route	Steps
-----	------------------	-------

Please note that there are steps in the following areas:

- Into and out of the Camellia Walk (8)
- Down to the Lioness and Kudu Pond (18)
- Up to the Wild Flower Garden (16)
- Down to the Tea House (14)
- Down from Spring Walk (21)

Distances

- Whole route around the gardens – 1.9km
- Event entrance (4) to picnic area (25) – 100m
- Event entrance (4) to Courtyard (23) – 500m
- Picnic area (25) to Long Pond (19) – 320m
- Long Pond (19) to Dragon Garden (17) – 65m